

## **TOOTSIE - BIG BAG**

### **SIZE**

width 34 cm, height 36 cm, depth 12 cm

### **YARN**

Liina yarn 18-ply, natural white (06) 300 g, brown (coffee 52) 200 g, Molla yarn 18-ply, lilac (pansy 36) 40 g, orange (carrot 45) 30 g

### **HOOK**

2.0 mm

### **GAUGE**

Bag piece 3 ch-arches x 8 rows = 5 cm x 5 cm

Side piece 13 dc x 6 rows = 5 cm x 5 cm

### **MATERIALS**

Two opening metal rings diameter 30 mm, two carabiner locks, four binding screws, plastic bottom stiffener 34 cm x 11 cm (or according to your work's size)

### **ABBREVIATIONS**

ch = chain stitch

st = stitch

yoh = yarn over hook

sc = single crochet (Am.)

hdc = half double crochet (Am.)

dc = double crochet (Am.)

tr = treble crochet (Am.)

sl st = slip stitch

3 dc tog = crochet three double crochets together

### **SUMMARY**

Crochet three separate pieces; the main bag piece with a lace pattern and two side pieces with double crochets back and forth. Join the pieces together with sc seams. Crochet two short straps and one long strap for the bag. Crochet a flower decoration for the front piece.

### **BAG PIECE**

Crochet 270 ch with natural white yarn.

Row 1 Crochet 1 sc into the tenth st from the hook, \*crochet 4 ch, skip four sts, crochet 1 sc\*. Repeat \*-\* for 51 more times (53 ch-arches in the round).

Row 2 Crochet 5 ch, crochet 1 sc into the center of the first ch-arch, \*crochet 3 ch, crochet 3 dc tog into the next ch-arch, 1 ch, 3 dc tog into the next ch-arch. Crochet 3 ch, 1 sc into the center of the next ch-arch\*. Repeat \*-\* throughout the round (26 groups of dc). Finish the round with 2 ch and dc. Change to brown yarn, leave the natural white yarn hanging at the side of work.

Row 3 Crochet 5 ch, crochet 1 sc into the space next to the previous round's dc group. Continue by crocheting 4 ch and 1 sc into each three-chain space (53 ch-arches).

Row 4 Crochet 3 ch, \*crochet 3 dc tog into the ch-arch, 1 ch, 3 dc tog into the next ch-arch. Crochet 3 ch, 1 sc into the center of the next ch-arch, crochet 3 ch\*. Repeat \*-\* throughout the round (27 groups of dc). Finish the round with 1 ch and 1 dc instead of 3 ch. Change to natural white yarn, leave the brown yarn hanging at the side of work.

Row 5 Crochet as in row 3, but with natural white yarn.

Row 6 Crochet as in row 2.

Repeat rows with brown and natural white yarns according to instructions (brown rows 3 and 4,

natural white rows 3 and 2). Work 13 brown stripe patterns and 14 natural white stripe patterns. Crochet one additional row of ch-arches in natural white according to round 5 instructions. Continue without cutting the yarn.

Crochet seven rows of sc back and forth along the short edge of the work. Row 1 Crochet 3 sc into each stripe (3 sc x 27 stripes = 81 sc). Rows 2 - 6 Crochet 1 ch, crochet 1 sc into each st (81 sc, including the starting ch).

Crochet one row of treble arches; crochet 1 ch, 1 sc, \*1 hdc, 2 dc in the same st, 1 dc, 1 dc, 2 dc in the same st, 1 hdc, 2 sc tog (decrease)\*. Repeat \*-\* to the end of the row (10 arches of treble crochets), at the end of row work sc sts instead of decrease sts. Cut yarn and weave in ends. Crochet seven rows of sc and treble crochet arches to the other short edge of the work as well.

Steam or block the piece into shape.

### **SIDE PIECE**

Crochet 31 ch with natural white yarn.

Rnd 1 Crochet 1 dc into the fourth st from the hook, crochet 1 dc into each st (29 dc, including the starting chs).

Rnds 2 - 44 Crochet 2 ch, crochet 1 dc into each st.

Rnd 45 Crochet 1 ch, crochet 1 sc into each st. Continue without cutting the yarn.

Crochet chain-arch rows on the three sides of the piece. Start from the upper left corner and crochet (towards the bottom edge) \*4 ch, skip one row of dc, crochet sc\*. Repeat \*-\* for 21 times on the long side, then crochet 5 ch at the bottom corner and 1 sc into the first st of the bottom edge. Continue by crocheting \*4 ch, skip three sts, crochet 1 sc\*. Repeat \*-\* for six times, then crochet 5 ch at the bottom corner and 1 sc into the first st of the other long edge. Continue by crocheting \*4 ch, skip one row of dc, crochet 1 sc\*. Repeat \*-\* for 21 times on the other long side, continue without cutting the yarn. There are 53 ch-arches around the side piece.

Crochet seven rows of sc along the upper edge; 1 ch at the beginning of each row and 1 sc into each st (29 sc).

Cut yarn and weave in ends. Crochet two identical side pieces.

### **FLOWER DECORATION**

Rnd 1 Make a small loop with brown yarn, insert the hook through the loop, pull the yarn tail to the right side, and crochet 3 ch, then crochet 11 dc into the loop while carrying the yarn tail along with the stitches throughout the round. Close the round with a sl st into the third ch, tighten the loop by pulling the yarn tail tightly. There are 12 dc in the round including the starting 3 chs.

Rnd 2 Work a sdc (or 3 ch), then crochet 2 dc into each st (24 dc). Close the round with a sl st, leave a yarn tail of about 70 cm, cut the yarn.

Rnd 3 With orange yarn, work this round onto the front loop of the stitches. Work a ch and a sc in the same st, \*work 1 hdc and 1 dc into the next st, 3 tr into each of the next two sts, 1 dc and 1 hdc into the next st, sc into the next 2 sts\*. Repeat - until the end of the round. Leave a yarn tail of about 50 cm, cut the yarn.

Place the flower decoration on the front piece of the bag, about 6 cm below the top edge and centered. Sew it in place with a few stitches using the orange yarn tail you left.

### **SIDE SEAMS**

Place one side piece on the bag piece with wrong sides together and align the upper edges. Crochet the side piece to the bag piece with sc with natural white yarn; 1 sc into each st along

the upper edge and 4 sc into each ch-arch (53 ch-arches). The seam will be visible on the right side of the work. Cut yarn and weave in ends.

Crochet the other side piece to the bag piece following the same instructions.

### **SHOULDER STRAP**

Crochet 251 ch with lilac yarn. Crochet 1 sc into the second st from the hook, then crochet 1 sc into each st. At the end of the row, crochet 1 ch and continue by crocheting 1 sc into each st for a total of five rows. Leave a yarn tail as long as possible, cut the yarn. Fold the strap in half and sew the long sides together stitch by stitch. Tie the carabiner locks to the ends of the strap.

### **HANDLES**

Crochet 76 ch with orange yarn.

Rnd 1 Crochet 3 sc into the second st from the hook, then crochet 73 sc. At the end of the round, crochet 3 sc, then continue by crocheting 73 sc along the other side of the chain. Transition to the next round seamlessly.

Rnd 2 Crochet 2 sc, 3 hdc, 2 dc, 1 sc into the ends' first 7 sts, then crochet 1 sc into each remaining st.

Rnd 3 Crochet 2 sc, 1 hdc, 2 dc, 1 sc, 2 hdc, 1 dc, 2 hdc, 1 sc, 2 dc, 1 hdc, 2 sc into the ends' first 7 sts, then crochet 1 sc into each remaining st. Cut and fasten off the yarn. Fold the handle in half and sew the long sides together for a total of 58 sts, centering the stitches at the handle's midpoint. Leave the same length of attachment tails at both ends.

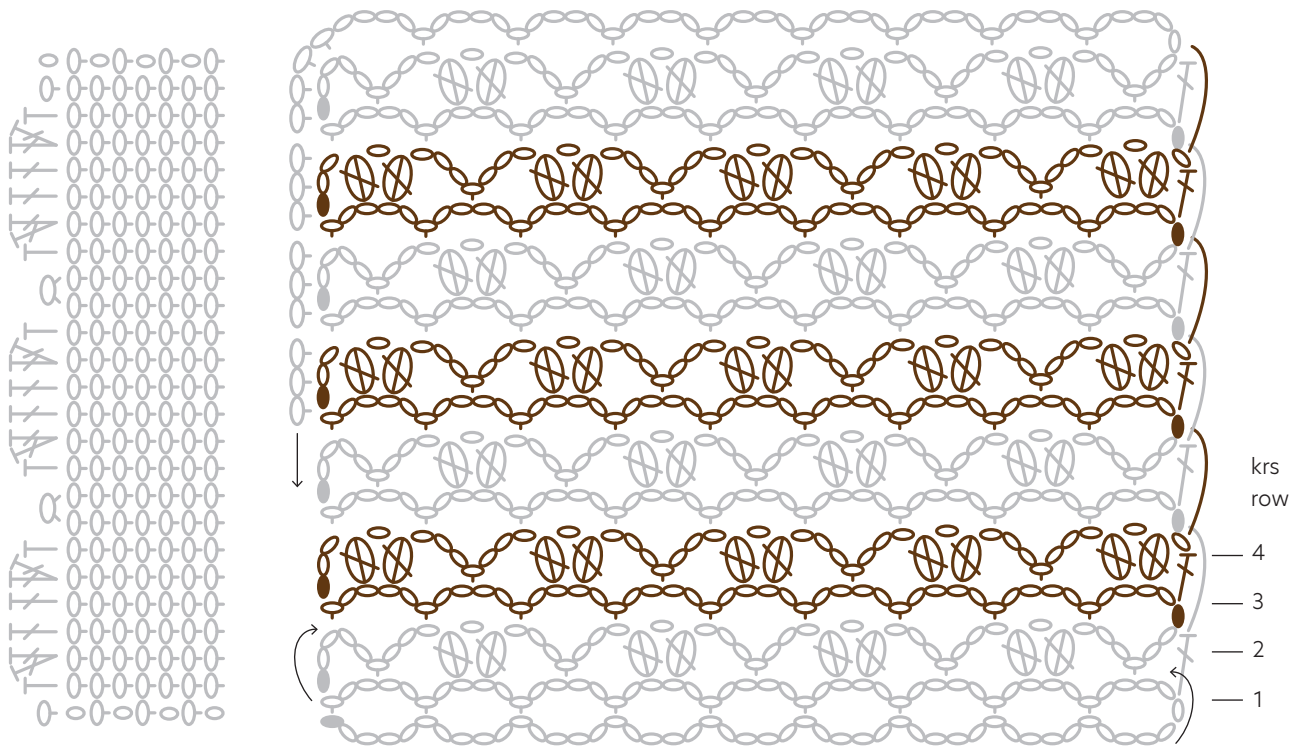
Crochet two identical handles. The finished length of each handle is 32 cm.

Place the handles on top the bag piece about 10 cm from the edges, attach them in place with binding screws.

### **FINISHING TOUCHES**

Fold the side pieces inside the work, measure the midpoint of the upper edge of each side piece, and thread the opening metal rings through them, approximately 4 rows from the upper edges. Attach the shoulder strap to the rings using the carabiner locks.

TOOTSIE-ISO LAUKKU, KAAVIO  
TOOTSIE BIG BAG, CHART



Virkkaa alkuun 270 kjs (tässä kaaviossa on alkuun virkattu 50 kjs).  
Work 270 chs to begin (in this chart, 50 ch sts has been worked in the beginning).

Virkkaa molempiin lyhyisiin sivuihin seitsemän ks-kerrosta ja kaarireunus. Lyhyt reuna on työn yläreuna.  
Work seven sc rows and an arches row on both short edges. The short edge is the upper edge of the work.

- |  |                                                                       |  |                                                               |
|--|-----------------------------------------------------------------------|--|---------------------------------------------------------------|
|  | kerroksen aloittava ketjusilmukka<br>starting chain stitch of the row |  | kolme pylvästä yhteen<br>three double crochets together       |
|  | ketjusilmukka, kjs<br>chain, ch                                       |  | lankajuoksu työn sivussa<br>the yarn loop at the side of work |
|  | kiinteä silmukka, ks<br>single crochet (Am.), sc                      |  | puolipylväs, pp<br>half double crochet (Am.), hdc             |
|  | pylväs, p<br>double crochet (Am.), dc                                 |  | 2 ks yhteen (kavennus)<br>two sc worked together (decrease)   |