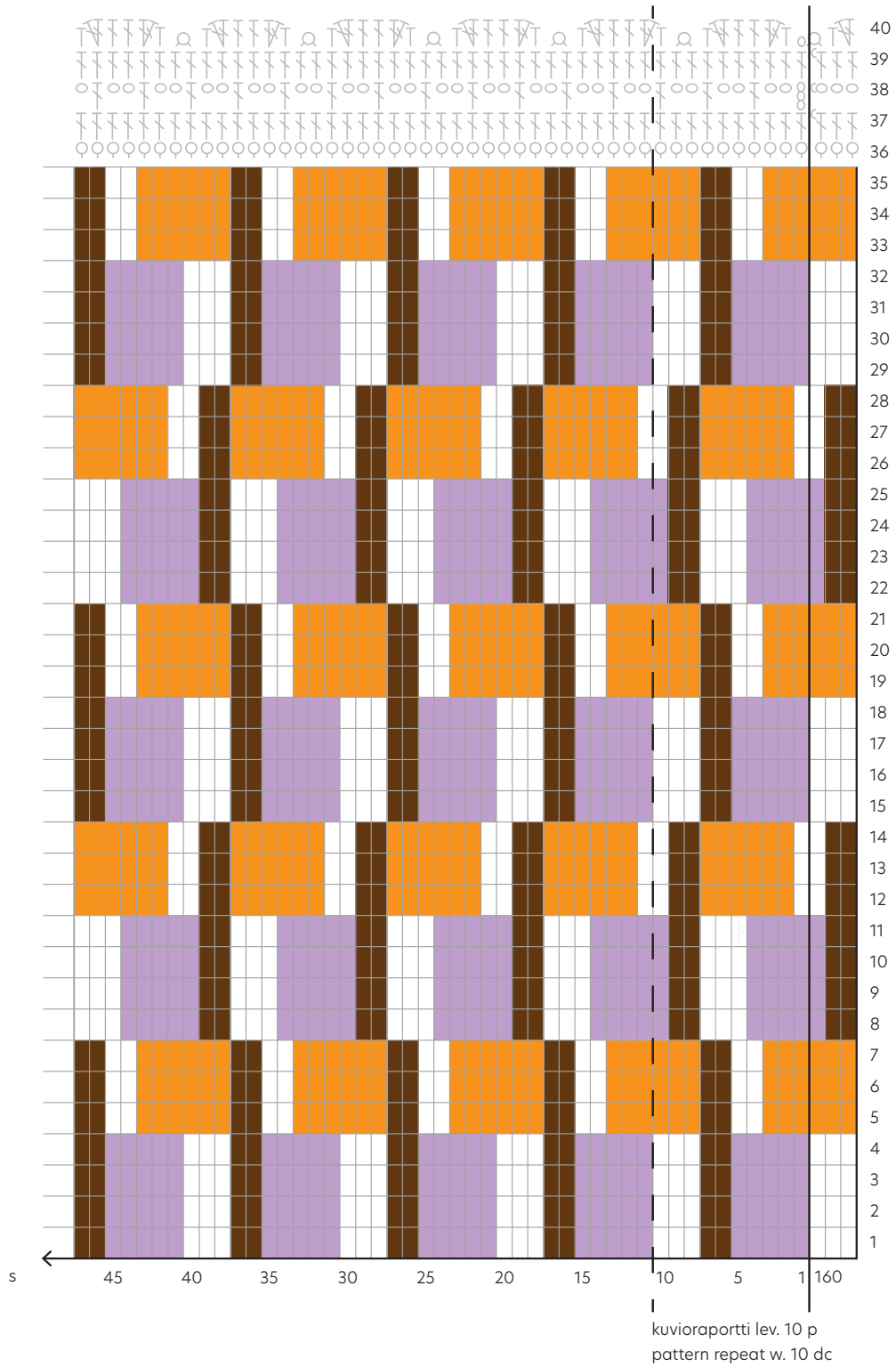







KERTTU-REPPU, KAAVIO, MONIVÄRINEN LAUKKUKAPPALE
 KERTTU BACKPACK, CHART, MULTICOLORED BAG PART


krns
 rnds




   pylväs, p
 double crochet (Am.), dc

 ketjusilmukka, kjs
 chain, ch

 2 ks yhteen (kavennus)
 two sc worked together (decrease)

 kiinteä silmukka, ks
 single crochet (Am.), sc

 puolipylväs, pp
 half double crochet (Am.), hdc

 piilosilmukka, ps
 slip stitch, sl st